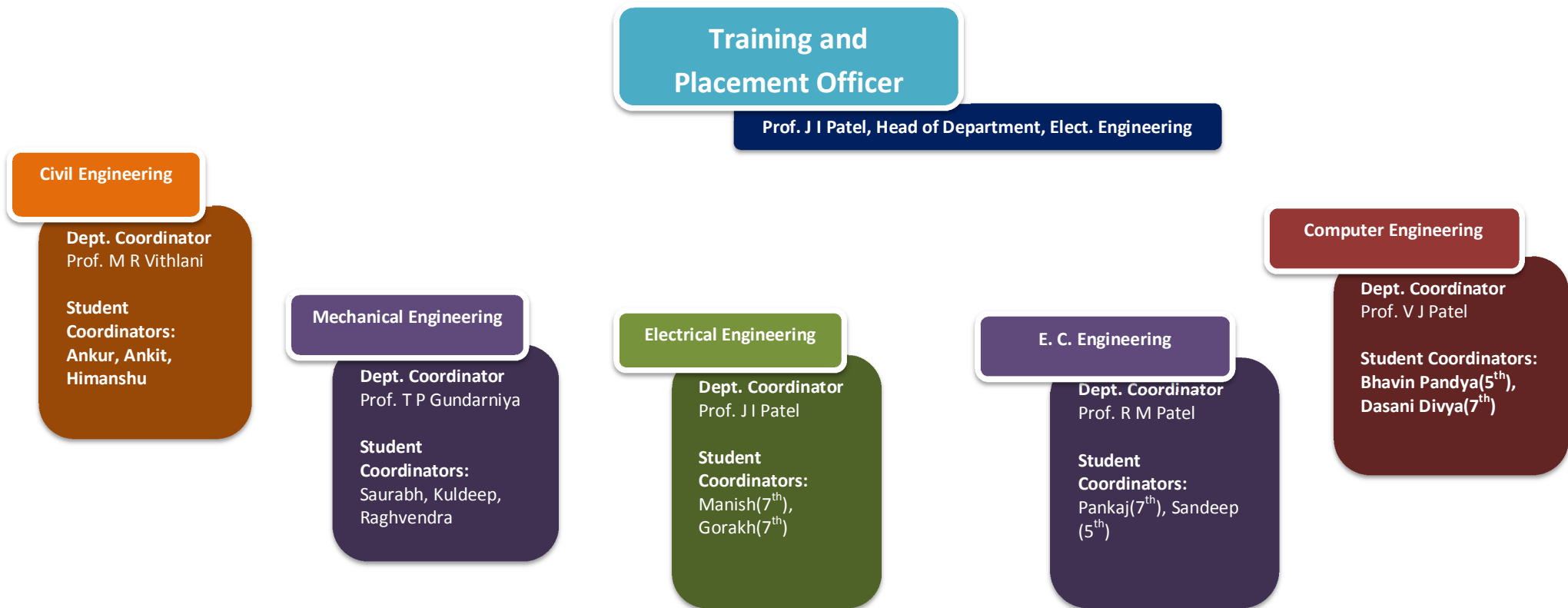


Government Engineering College, Dahod

Training and Placement Cell



Student Coordinators play the most important role in Training and Placement activity. They involve positively and actively participate. Student Coordinators are appointed to oversee the completeness and accuracy of data entered by their classmates and juniors. Hence, data collection is their primary responsibility.

Department Coordinators supervise and address the problems faced by student coordinators in collection or maintenance of student records.

The **TPO** is responsible for overall process of Training and Placement Office.